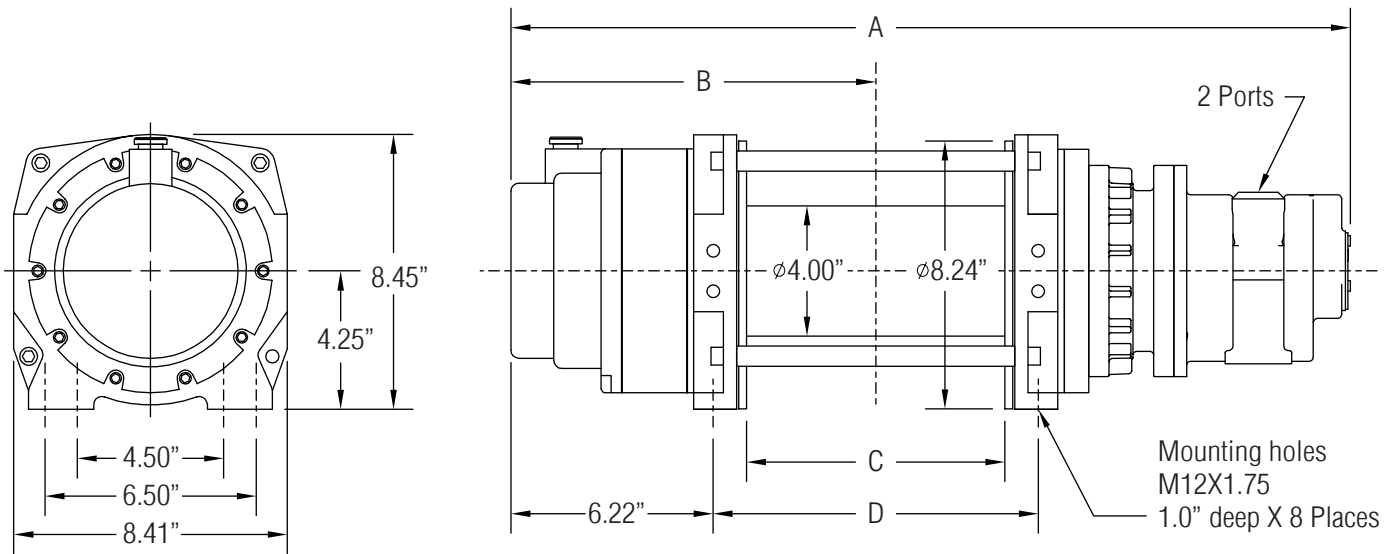


DIMENSIONAL DATA

All measurements are shown in inches.



Drum Size	Dimensions (Inches)						Typical Weight			Wire Rope Capacity			Motor (HP)	Port Size
	A			B	C	D	2.5 HP	4.25 HP	6.5 HP	1/4"	5/16"	3/8"		
	2.5 HP	4.25 HP	6.5 HP											
-01	24.4"	26.1"	26.8"	11.22"	8.0"	10.0"	95 LBS	105 LBS	110 LBS	326'	228'	159'	2.5	1/2" NPT
-02	26.4"	28.1"	28.8"	12.22"	10.0"	12.0"	98 LBS	108 LBS	113 LBS	407'	285'	198'	4.25	3/4" NPT
-03	28.9"	30.6"	31.3"	13.47"	12.5"	14.5"	108 LBS	118 LBS	123 LBS	509'	356'	248'	6.5	1" NPT

PERFORMANCE

Model	HP	Power Input		Gear Ratio	Calculated Performance					
		PSI	SCFM		First Layer		Mean Drum		Full Drum	
					LBS	FPM	LBS	FPM	LBS	FPM
HG750-P	4.25	65	110	36:1	750	95.4	562	123.8	457	152.1
HG1600-P	6.5	75	190	36:1	1600	95.4	1206	123.8	981	152.1
HG2750-P	2.5	70	75	261:1	2,750	17.6	2,190	22.8	1,782	28.0
HG5000-P	4.25	65	110	261:1	5,000	13.2	3,910	17.1	3,182	21.0

Performance based on intermittent duty cycles.

CAUTION: The final determination as to the suitability of this product for any purpose is solely that of the user. Columbia products are not to be used to lift people or to lift anything over people.