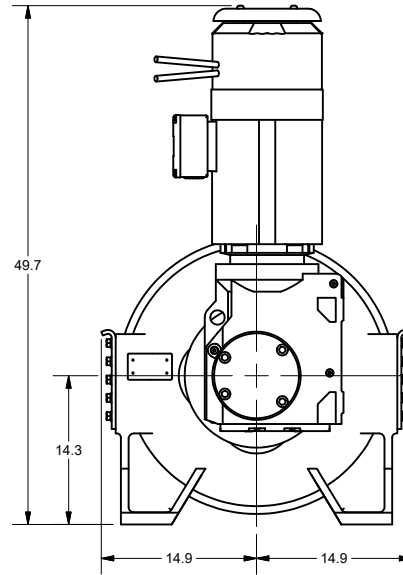
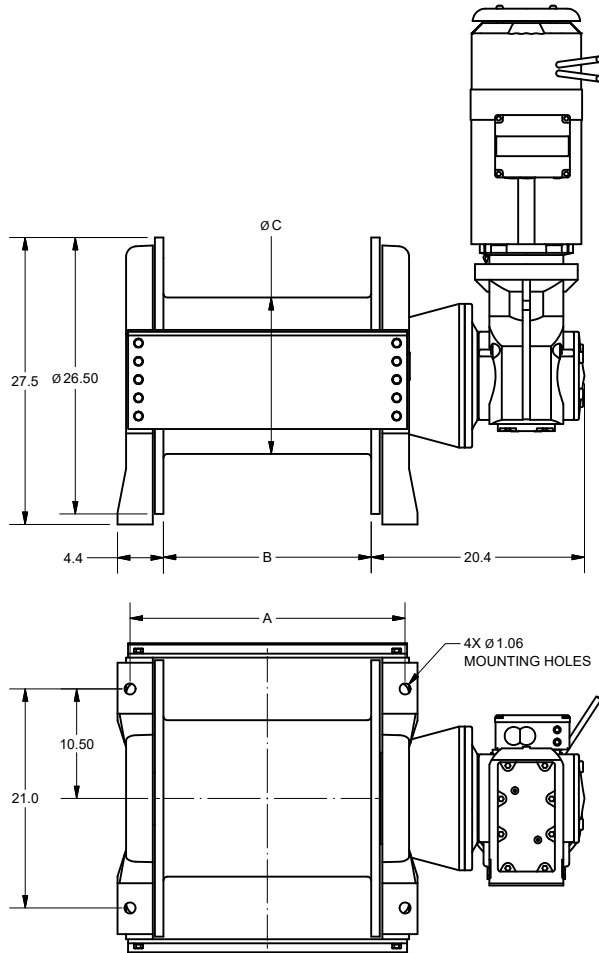


## DIMENSIONAL DATA

All measurements are shown in inches.



Drum Size	Dimensions			Typical Weight (LBS)	Wire Rope Capacity	
	A	B	C		3/4"	7/8"
-01	26.4"	19.9"	15.0"	1800	982'	721'
-02	38.4"	32.0"	16.0"	2100	1656'	1217'

Typical dimensions shown; gearmotors can be rotated in 90° increments.

## PERFORMANCE

Model	Motor HP	Calculated Performance (7/8" wire rope)					
		First Layer		Mean Drum		Full Drum	
		LBS	FPM	LBS	FPM	LBS	FPM
HU14500	7.5	14,500	15.4	11,272	19.8	9,815	22.7
HU17000	10.0	17,000	16.6	13,216	21.4	11,508	24.6
HU19000	12.5	19,000	18.8	14,770	24.2	12,861	27.8
HU21000	15.0	21,000	20.5	16,324	26.4	14,215	30.4

Performance based on 230/460 3Ø 60 Hz input power; other voltages available.

**CAUTION:** The final determination as to the suitability of this product for any purpose is solely that of the user. Columbia products are not to be used to lift people or to lift anything over people.